

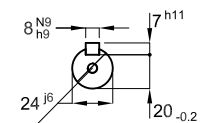
Main terminal box
2x M25x1.5
+
M20x1.5

Grounding 0.5-6 mm² / 20-10 AWG

Drain hole

Drain hole

DE Shaft End



DM8 WEG WPR-7339 (DS DIN332)

Thermal protection to switch off - thermistors 155°C
Color RAL 5009
Painting plan 207A
Mounting B3T

2.2 kW 02 Poles 50 Hz

A

ECM

LOC

SUMMARY OF MODIFICATIONS

HYBRISUSER

00

EXECUTED

HYBRISUSER



THREE PH. MOTOR W22 IE3

FRAME 90L IP55 TEFC

PREVIEW

WDD 00

SHEET /

