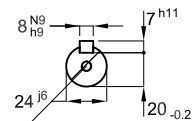


DE Shaft End



DM8 WEG WPR-7339 (DS DIN332)

Color RAL 5009
Painting plan 207A
Mounting B3T

1.5 kW 02 Poles 50 Hz A

ECM	LOC	SUMMARY OF MODIFICATIONS	EXECUTED	CHECKED	RELEASED	DATE	VER
EXECUTED	HYBRISUSER	THREE PH. MOTOR W22 IE3					
CHECKED		FRAME 90S IP55 TEFC					
RELEASED							
REL. DATE							

HYBRISUSER 00

PREVIEW
WDD 00
SHEET /

